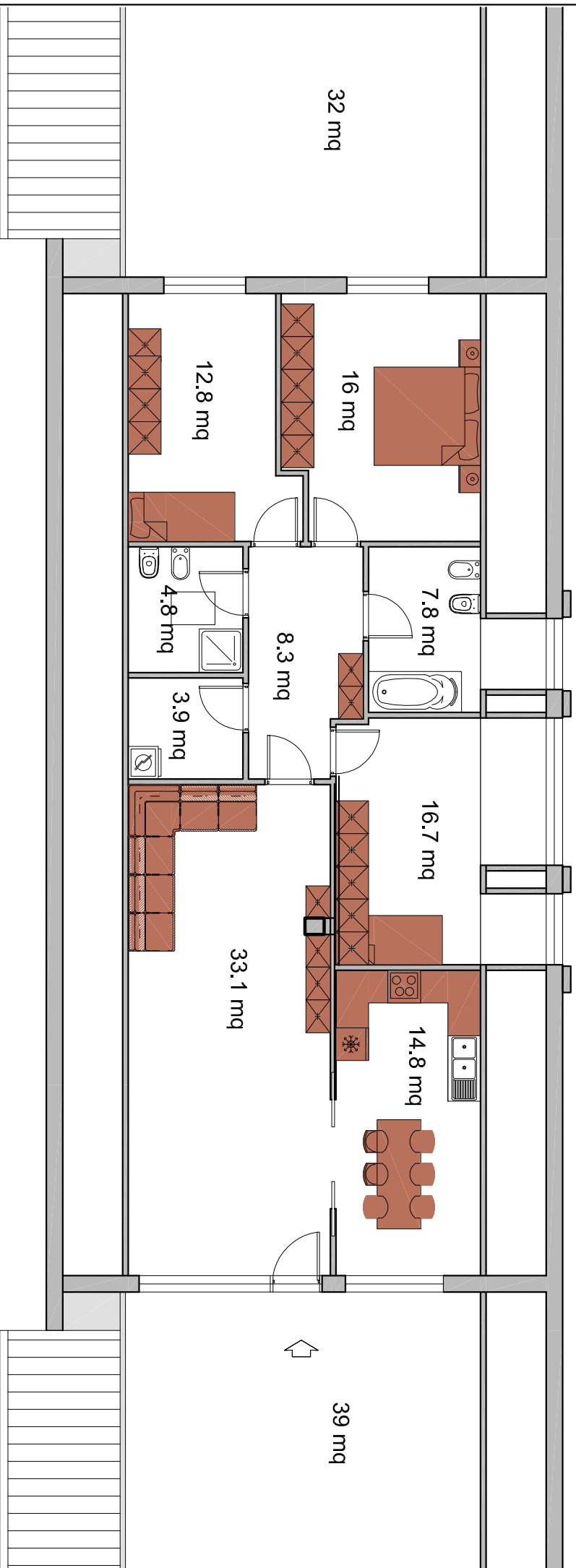


Comun Nuovo (BG) Stallo Lungo (comm.790)  
 Piano secondo (scala 1:100)  
 UNITA' 20



Planimetria individuazione (fuori scala)

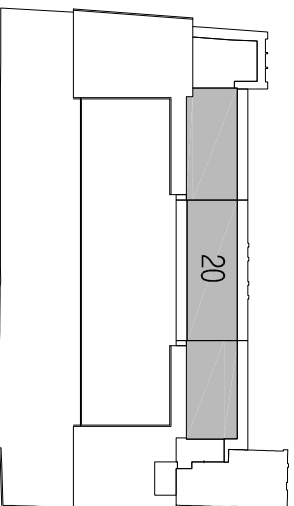


Tabella superfici	mq netti (utili, calpestabili)	mq lordi (compreso muri perimetrali, interni e 50% confinanti)	mq comm. (lordi in %)
Unità	118.20	175.00	(110%) 192.50
Terrazza 1		32.00	(30%) 9.60
Terrazza 2		39.00	(30%) 11.70
<b>Totale</b>			<b>213.80</b>