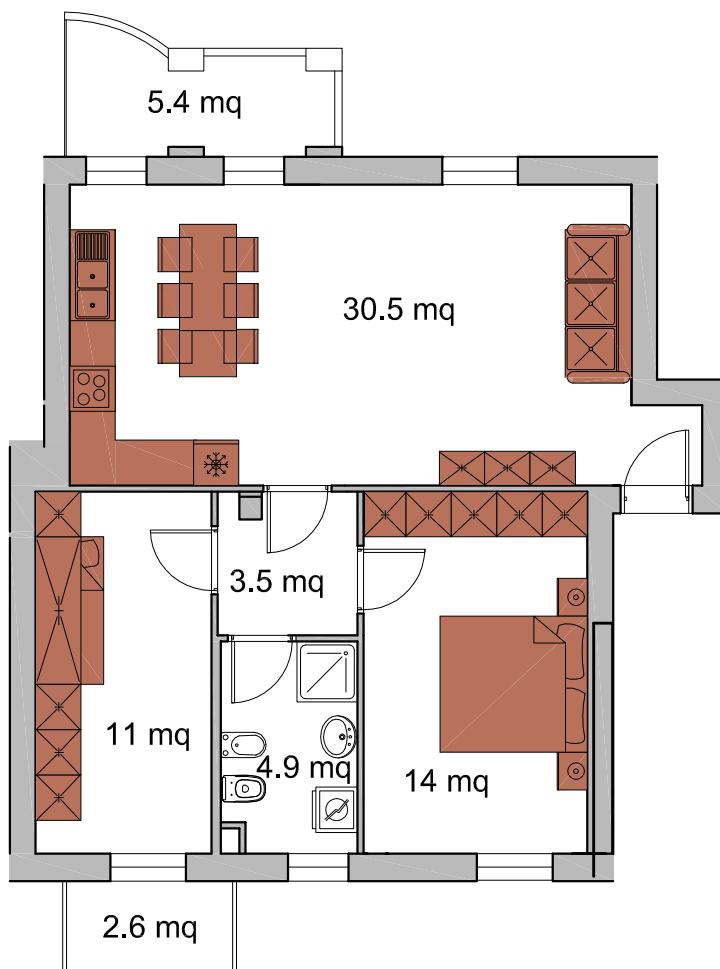


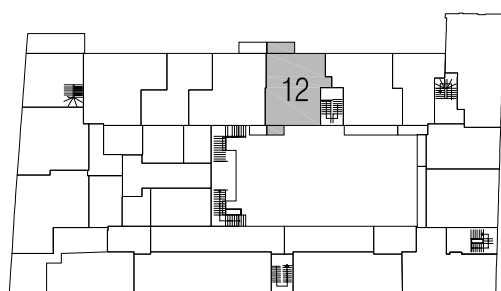
Comun Nuovo (BG) Stallo Lungo (comm.790)

Piano primo (scala 1:100)

UNITA' 12



Planimetria individuazione (fuori scala)



| Tabella superfici | mq netti<br>(utili, calpestabili) | mq lordi<br>(compreso muri perimetrali,<br>interni e 50% confinanti) | mq comm.<br>(lordi in %) |
|-------------------|-----------------------------------|--|--------------------------|
| Unità             | 63.90                             | 75.40  | (110%) 82.94             |
| Balconi           |                                   | 8.00   | (50%) 4.00               |
| <b>Totale</b>     |                                   |  | <b>86.94</b>             |