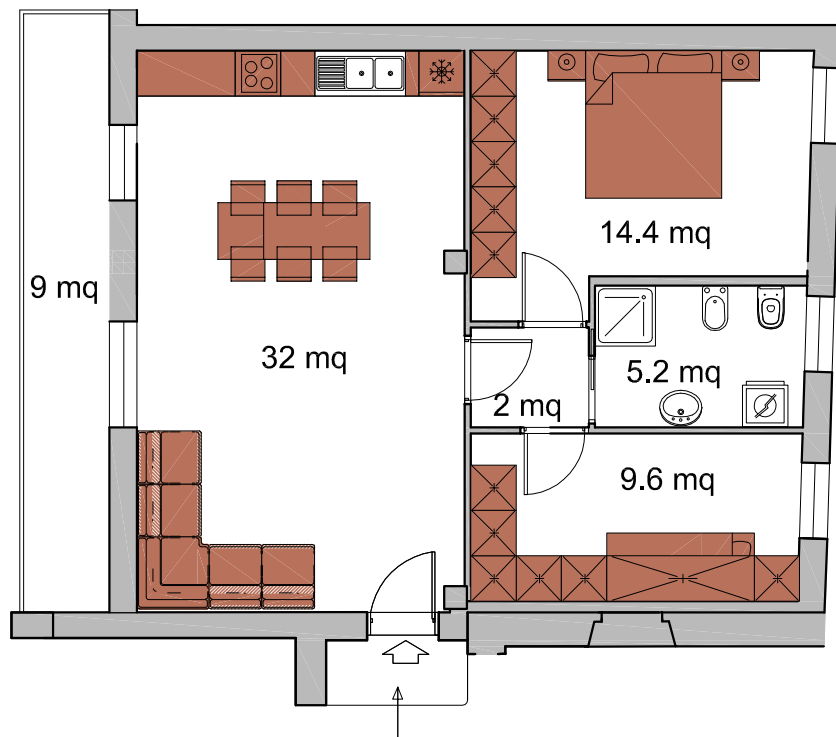


# Comun Nuovo (BG) Stallo Lungo (comm.790)

Piano primo (scala 1:100)

UNITA' 7



Planimetria individuazione (fuori scala)

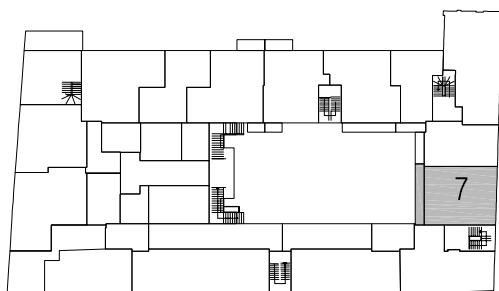


Tabella superfici	mq netti (utili, calpestabili)	mq lordi (compreso muri perimetrali, interni e 50% confinanti)	mq comm. (lordi in %)
Unità	63.20	74.80	(110%) 82.28
Terrazzo		9.00	(50%) 4.50
<b>Totale</b>			<b>86.78</b>