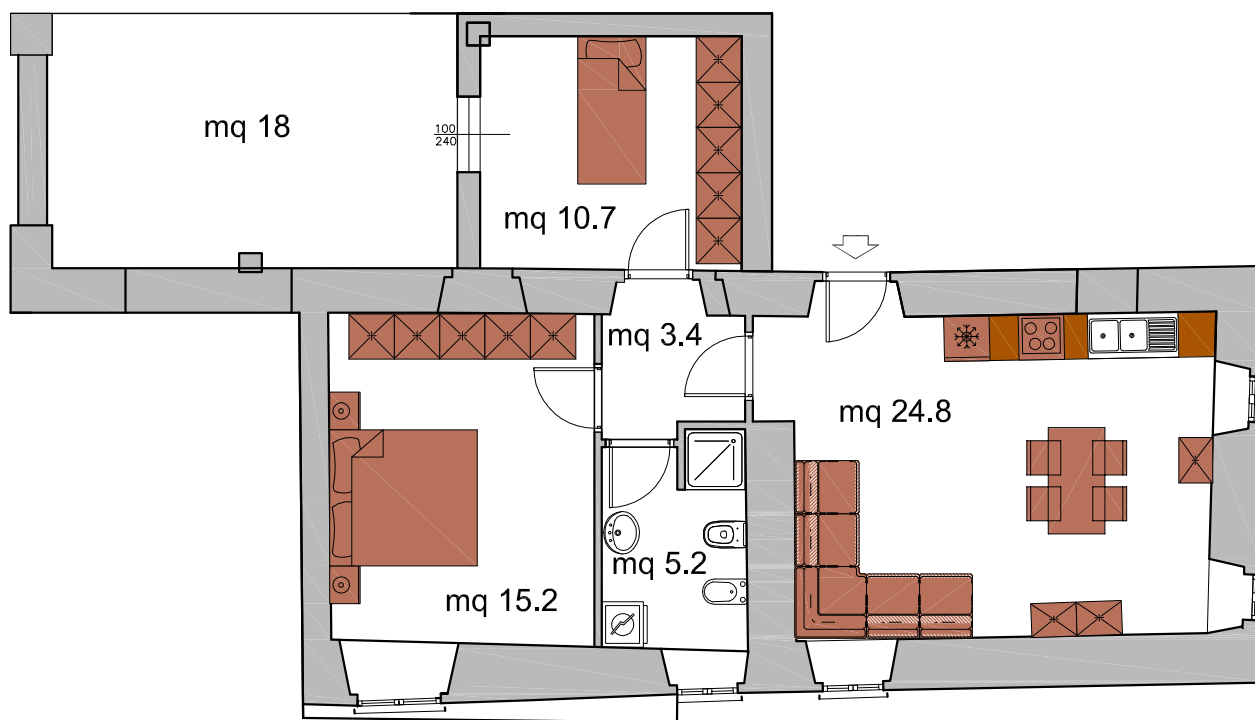


# Comun Nuovo (BG) Stallo Lungo (comm.790)

Piano terra (scala 1:100)

UNITA' 2



Planimetria individuazione (fuori scala)

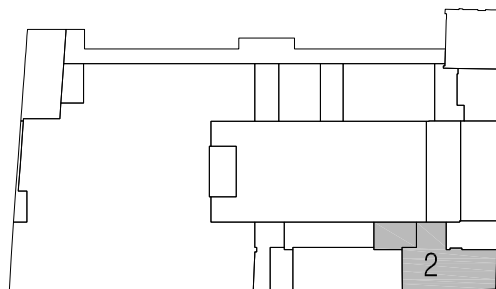


Tabella superfici	mq netti (utili, calpestabili)	mq lordi (compreso muri perimetrali, interni e 50% confinanti)	mq comm. (lordi in %)
Unità	59.30	81.60	(110%) 89,76
Portico		18.00	(40%) 7.20
<b>Totale</b>			<b>96.96</b>